



TACTILE FLAT BACK STAINLESS STEEL (316)

**P5
GRIP**

ITEM CODE	TT-FS
RANGE	Hazard Tactile
DESIGN	Classic
MATERIAL	316 marine grade stainless steel
FINISH	Machined
DIMENSIONS	BOTTOM OF DOME: 35mm TOP OF DOME: 25mm THICKNESS: 5mm



TECHNICAL DATA SHEET

FEATURES

Machined, concentric circle design on the horizontal face with a smooth outer edge

Complies with AS 1428.4

Complies with the NCC Section D clause 3.8 (TGSIs)

Complies with slip resistance requirements as detailed in HB 198

Backed by 10 year warranty

SLIP RESISTANCE TESTING

Important information: To determine a classification of a slip resistance rating, see Australian Standards Hand Book 198 (HB 198), an Introductory Guide to Slip Resistance of Pedestrian Materials. This document outlines the minimum ratings of a location and situation of a pedestrian surface.

TEST Wet Pendulum Test — AS 4586 APPENDIX A

FOUR S 96 SLIDER = 104 **CLASS** = P5

TRL 55 SLIDER = 79 **CLASS** = P5

TEST Wet/Barefoot Ramp Test — AS 4586 APPENDIX C

MEAN ANGLE OF INCLINATION = 27° **CLASS** = C

TEST Oil/Wet Ramp Test — AS 4586 APPENDIX D

CORRECTED MEAN OVERALL ACCEPTANCE ANGLE = 29° **CLASS** = R13

LUMINANCE TESTING

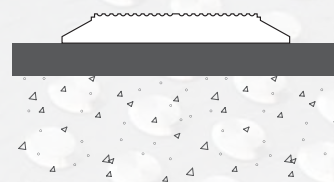
To determine a luminance contrast between a substrate and the Stepsolve TGSi stud, see: AS 1428.4:2009. Stepsolve can test your substrate for luminance contrast to give you peace of mind that your project will be fully compliant to AS 1428.4.

TEST Design for Access & Mobility — AS 1428.4 APPENDIX E

LUMINANCE REFLECTANCE RATING / WET = 45.17

LUMINANCE REFLECTANCE RATING / DRY = 46.58

INSTALLATION



CODE DT0101

FIXING Direct stick

NOTE Any thick or thin non drillable substrate



STEPSOLVE Unit 3, 29 Adam Street Hindmarsh SA 5007
AUSTRALIA Ph: (08) 8340 9964 Fax: (08) 8340 9968
info@stepsolve.com.au www.stepsolve.com.au