



# StepSolve TacWay Pad

TACTILE INDICATOR PADS



## PRODUCT DESCRIPTION

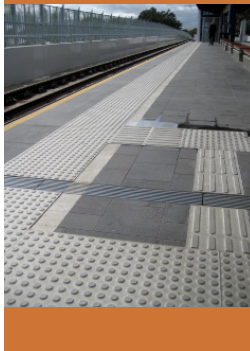
A tactile ground surface indicator pad in either studded or directional styles manufactured from long lasting UV stable polymer - suitable for indoor and outdoor application. Designed to warn the vision impaired of an impending hazard, or to provide directional guidance.

As part of The Disability Discrimination Act (DDA) compliance, it is mandatory to provide Tactile Warning Indicators (TGSI) to stairs, ramps and other changing conditions.



## DIMENSIONS & FEATURES

- R11 anti-slip rated
- Available in studded and directional formats
- Overall size of 600mm x 900mm size - can be cut to suit.
- Base thickness of 2.5mm, to ensure no trip hazards
- Stud protrusion height of 5mm.
- Abraded bottom surface to ensure optimal adhesion
- Service temperature range: -60°C to +120° C
- Easy to install over all substrates including concrete ceramic tiles, bitumen, timber and most other surfaces
- Manufactured from a blend of high performance polymers.
- Excellent resistance to alcohols, alkalis and acids.
- Improved resistance to weather, sunlight, acids, solvents, ozone and oxidation.
- Improved flame retardance and good abrasion resistance.
- Moderate resistance to oils and gasoline
- Low maintenance UV stable polished surface
- Resistant to heavy traffic abuse and maintenance machinery
- Available with a DIY installation kit



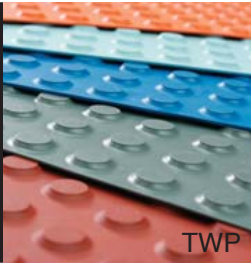
The company with every floor and step safety solution.



**COLOURS AVAILABLE:** Safety Yellow, Black, Terracotta, Ivory and Grey

## LUMINANCE CONTRAST & COMPLIANCE

In accordance with Australian Standards, a minimum luminance contrast of 30% must be provided between the tactile indicator pad and the surrounding substrate. Stepsolve TacWay pads are available in a range of colours allowing specifiers the option of selecting the most appropriate luminance value for any given installation. Our TacWay pads comply with: AS/NZS 1428:4.2002 Design for access and mobility. AS/NZS 4586:1999 Slip resistance classification for new pedestrian surface materials.



# StepSolve TacWay Pad

TACTILE INDICATOR PADS



The company with every floor and step safety solution.



**COMPLIES WITH**

- AS/NZS 1428:4.2002 Design for access and mobility
- AS/NZS 4586:1999 Slip resistance classification for new pedestrian surface materials

Tacway Pad luminance contrast details							
Colour	Product Code	Description	Product Type	Mean Luminance Value		Contrast range 30%	
				Dry	Wet	Dry	Wet
Ivory	TWP-I	600x900 Tactile Pad	Haz/Dir Ind	68.9	37.1	48.3to89.6	26.0to48.3
Yellow	TWP-Y	600x900 Tactile Pad	Haz/Dir Ind	50.1	25.5	35.1to65.1	17.9to33.2
Grey	TWP-G	600x900 Tactile Pad	Haz/Dir Ind	25.6	16.2	17.9to33.3	11.3to21.0
Black	TWP-B	600x900 Tactile Pad	Haz/Dir Ind	2.7	0.4	1.9to3.5	0.3to0.5
Sky Blue	TWP-SB	600x900 Tactile Pad	Haz/Dir Ind	46.6	26.14	32.6to60.6	18.3to34.0
Ocean Blue	TWP-OB	600x900 Tactile Pad	Haz/Dir Ind	10.5	5.8	7.4to13.7	4.1to7.6
Terracotta	TWP-T	600x900 Tactile Pad	Haz/Dir Ind	9.9	5.0	7.0to12.9	3.5to6.5
Charcoal Grey	TWP-CG	600x900 Tactile Pad	Haz/Dir Ind	14.2	7.3	10.0to18.5	5.1to9.4
Orange	TWP-O	600x900 Tactile Pad	Haz/Dir Ind	22.6	13.8	15.8to29.3	9.7to18.0